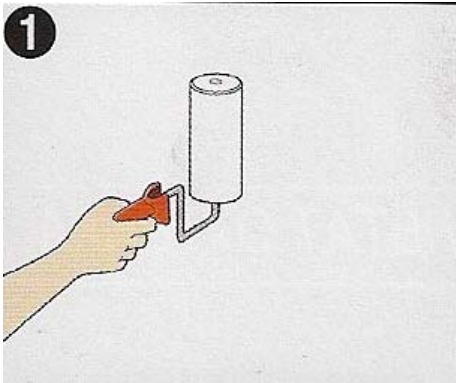
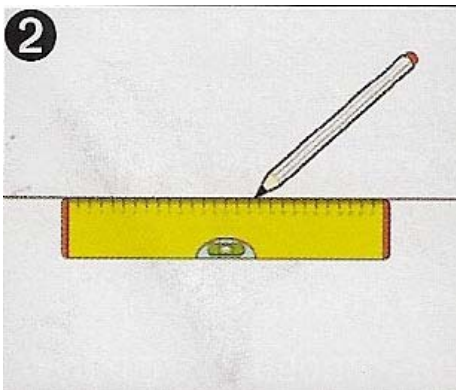


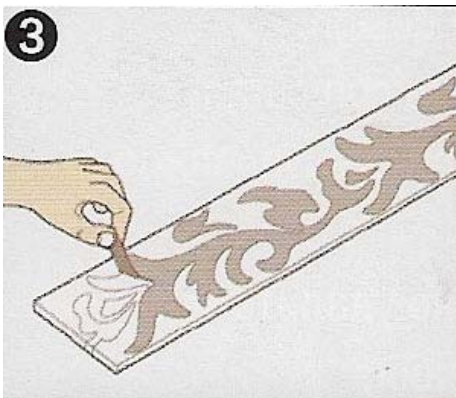
TWO COLOR EFFECT INSTRUCTIONS



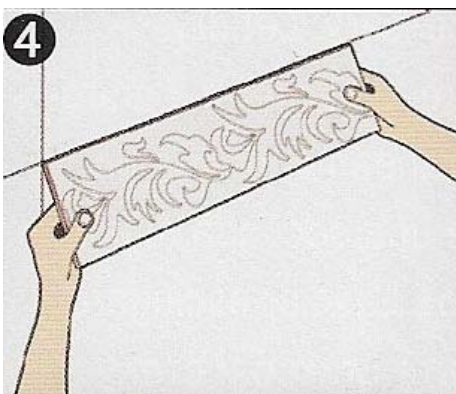
- Paint the wall with the chosen color and let dry



- Trace out a horizontal line indicating where to apply the sticker.

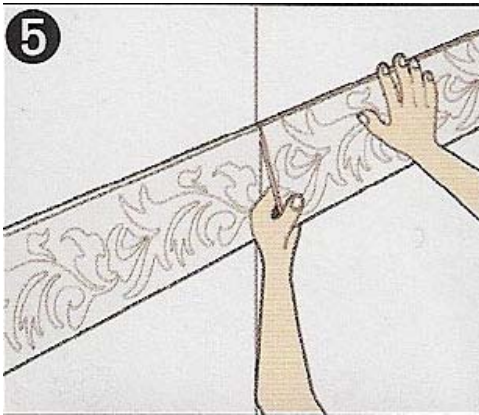


- Place the sticker on a table with the protective film side facing up. Remove the part of the film printed in grey to release the adhesive underneath.

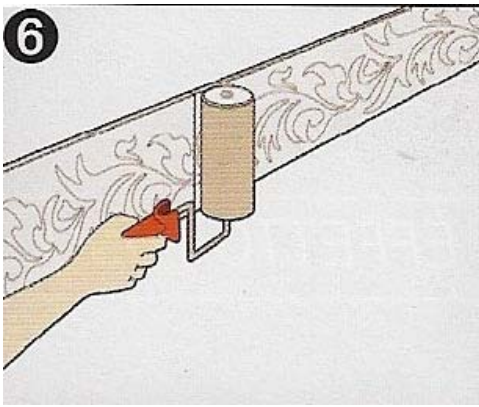


- Apply the panel with the sticker on the wall following the traced line.

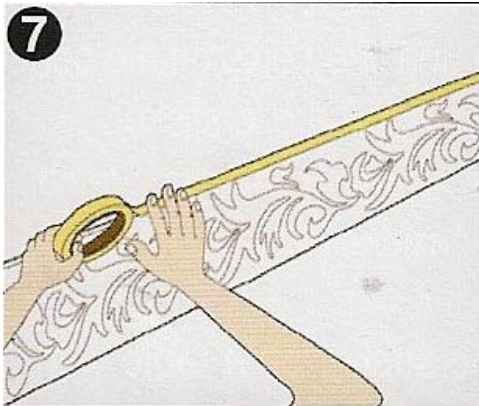
TWO COLOR EFFECT INSTRUCTIONS (PAGE 2)



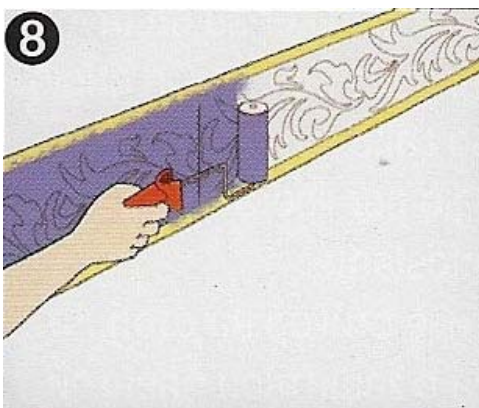
- In case of a large design pay attention to the repeat.



- Push the sticker onto the wall to guarantee a good adhesion.

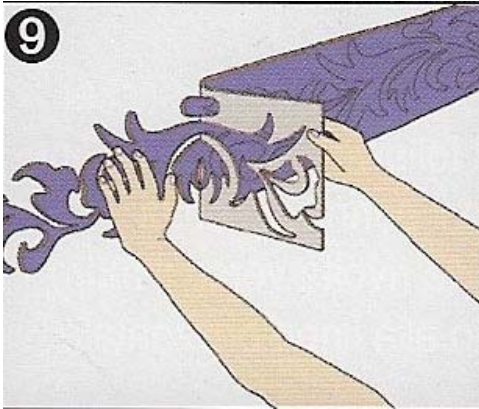


- To protect the wall underneath apply a masking tape around the panel before painting.

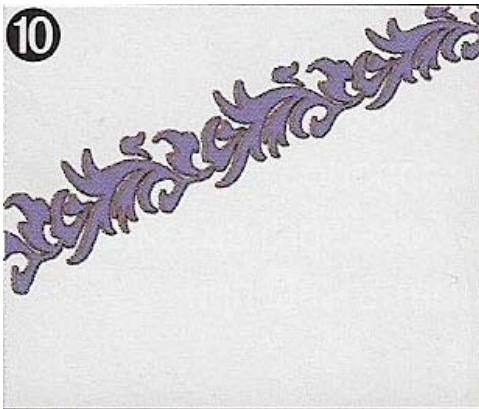


- Paint the sticker with a small roller. Choose a dense high coverage paint (do not dilute). Apply a second coat if necessary and let dry.

TWO COLOR EFFECT INSTRUCTIONS (PAGE 3)

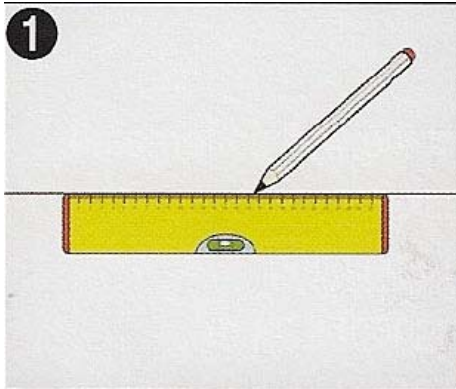


- Carefully remove the material around the design.

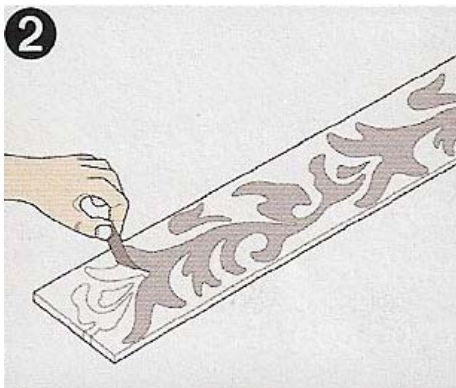


- Final Result.

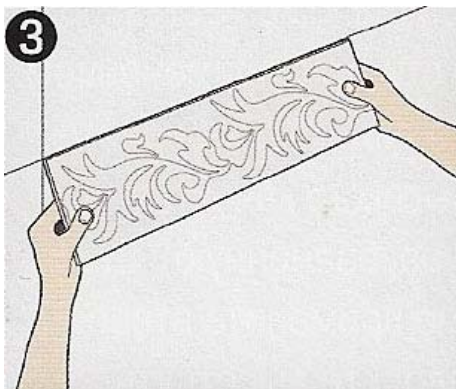
TWO COLOR EFFECT INSTRUCTIONS



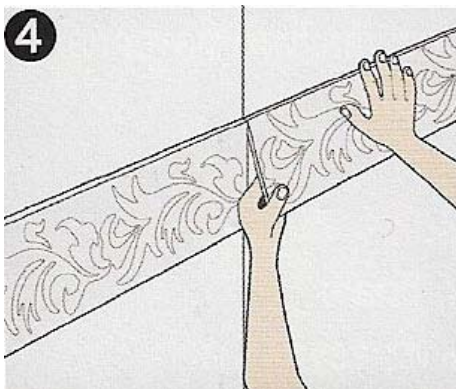
- Trace out a horizontal line indicating where to apply the sticker



- Place the sticker on a table with the protective film side facing up. Remove the part of the film printed in gray to release the adhesive underneath.

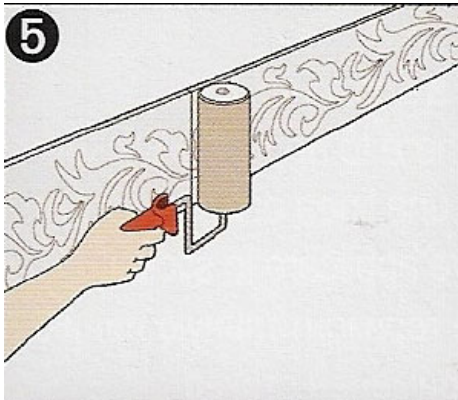


- Apply the panel with the sticker on the wall following the traced line.

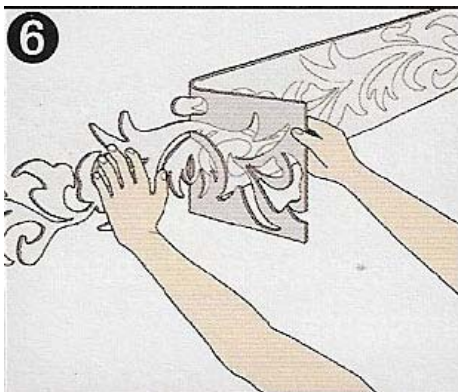


- In case of a large design, pay attention to the repeat

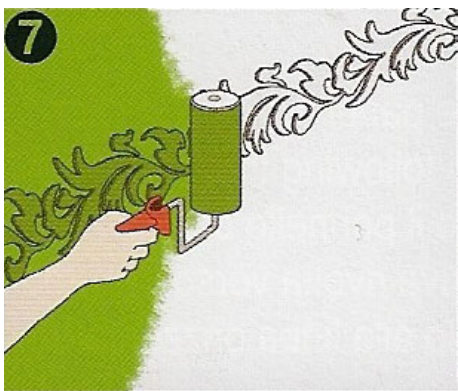
TWO COLOR EFFECT INSTRUCTIONS (PAGE 2)



- Push the sticker onto the wall to guarantee a good adhesion.



- Carefully remove the material around the design.



- Paint the sticker and the wall using a roller. Apply a second coat if necessary. Let dry.



- Final Result.