

TATTOOWALL™ APPLICATION

Page 1



1. Verify the exact dimensions (using a measuring tape) and levels (using a level) of the surface/s to be decorated.



2. Mask off or tape the perimeters with masking tape.



3. Protect all areas that will not be decorated with plastic or paper, these include walls, ceilings, windows or any other elements that will not be decorated.



4. Clean the surface and free it of dust, dirt, oil, damp or loose areas.



5. Apply P2M over the surface that requires decoration. Use a paint roller or brush. Make sure that all areas are covered and that the product does not pool.



6. Remove the masking tape that was applied to define the perimeters.



7. While waiting for P2M to dry (approx. 30 minutes at 68°F) wash all tools and brushes, and verify the actual measurements against the measurements provided on the sample.





8. Mark the centre horizontal line of the surface that will be decorated. Take the first Tattoowall™ print.



9. Take the first Tattoowall™ print.



10. The first print will be recognizable by a mark that indicates the horizontal centre. This mark will be positioned to correspond with the mark on the wall.



11. Gently position the Tattoowall™ sheet of paper with the smooth side facing the wall and the matt paper side



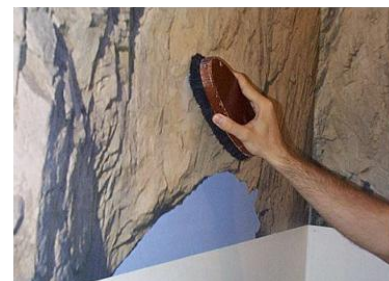
12. This will help to position the Tattoowall™ without it adhering to the P2M before centering has taken place.



13. Once the sheet has been correctly centered, begin to smooth it out, starting from the center towards the edges, using a “fish bone” motion. Once this operation is complete it is important to repeat the center mark of the wall on the Tattoowall™.



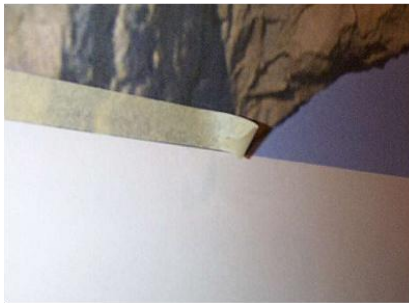
14. Once the positioning is complete, proceed with wetting the image with a damp sponge until the image is visible through the paper. With a sharp instrument, gently lift up a small section of the paper. Peel back the paper starting from the center. The process of wetting and removing the paper should be executed in sections of approximately 10 sqf at a time.



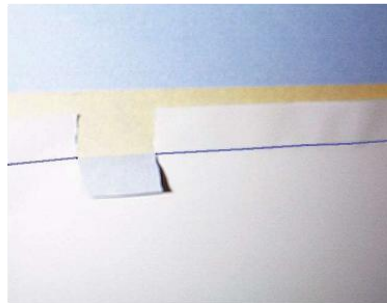
15. Use a brush to stipple the image. The stippling permits the adhesion to the surface.

16. Complete the stippling on the entire surface of the sheet that has been applied.





17. Apply a strip of low tack masking tape (approx. 0.8" high) to the entire length of the side where the successive sheet will be applied, leaving a space of approx. 0.01" between the edge of the sheet and the masking tape. Re-mark the center marking on the masking tape.



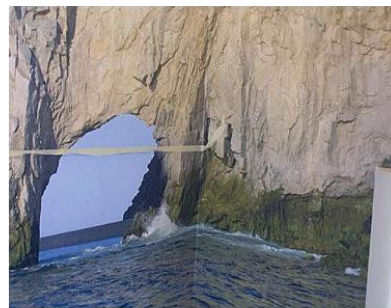
18. Line up the line of print, that appears between the 1st sheet and the masking tape, with the overlap line which will appear on all sheets excluding the first.



19. Along the overlap line, cut several flaps into the sheet in order to verify and check the alignment. This will assist in lining up the center marked on the sheet with the center marked on the wall.



20. Once the image is aligned, proceed with the installation of the 2nd sheet, following the same procedure as the 1st sheet.



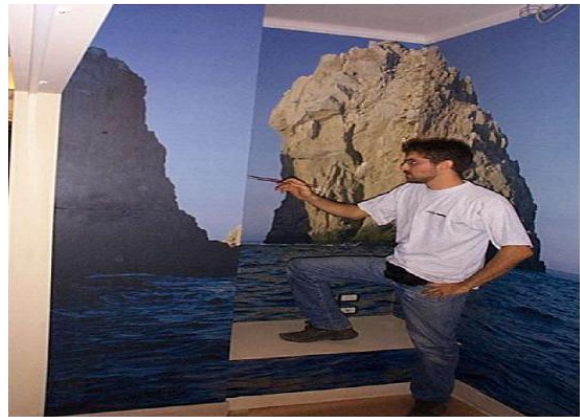
21. Once the paper has been wet and removed, and the stippling is complete, proceed with the removal of the overlap.



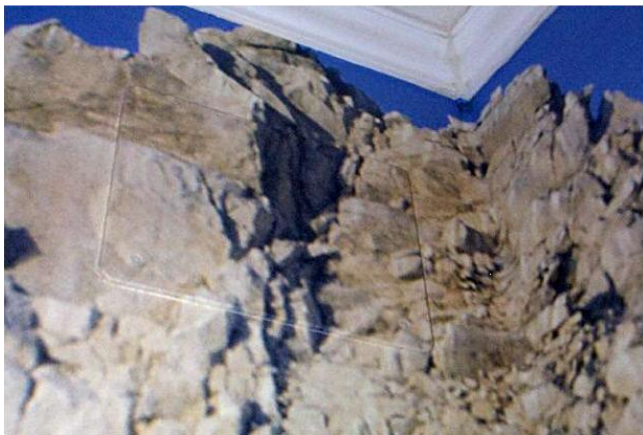
22. The overlap is removed with a sharp cutting knife or blade. Cut exactly within the 0.01" edge that was left uncovered between the masking tape and the edge of the 1st sheet.



23. Once this is complete, the masking tape will be gently removed. The final finishing stage will begin.



23) Use acrylic paints to touch up or modify the image. Once the touch ups are complete, it is possible to further protect the Tattoowall™ with P3. P3 is transparent protective coat which contains quartz and is mixed with 10% catalyst (working time once the catalyst is added is approx. 20 minutes). P3 gives an effect of roughness to the touch and removes all reflections of light, which gives Tattowall™ the typical characteristics of an “affresco”.



USEFUL TIPS:

- Due to the fact that the film is transparent, it is recommended that Tattoowall™ be applied to surfaces that are white or off white in color. Colored surfaces will affect the Tattowall colors due to the transparency.
- P2M can be considered dry when it is tacky to the touch. If the product remains on the fingers when touched, it is still wet.
- The wetting and removing of the paper must be done in sections on approx. 10sft at a time. Do not allow the paper to dry before attempting to remove it. Water activates the process and if it is left to dry, the paper will remain stuck to the Tattoowall.
- P3 must be mixed thoroughly, especially at the bottom, as the quartz tends to settle in the container.

USEFUL TOOLS FOR APPLYING TATTOOWALL™:

Tape measure, pencil, scissors, cutting knife/blade, plastic spatula/scrapper, masking tape (approx. 0,8” wide), paint brushes or paint rollers for applying P2, paint brushes for touch ups, sponge, bucket of water, detergent to clean brushes, protective paper or plastic to cover surfaces, moderately soft brush for stippling, acrylic paints for touch ups, cleaning cloth, spatula to mix P3.